

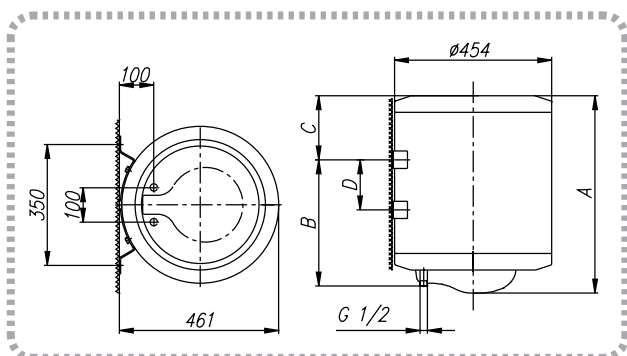
TECHNICAL INFORMATION

MODEL	SI10	SI30	SI50	SI80	SI100	SI150	SI200
Volume in liters	10	30	50	80	100	150	200
Vertical or horizontal	vertical	vertical	✓	✓	✓	✓	✓
DIMENSIONES							
A [mm]	500	468	570	775	935	1305	1505
B [mm]	398	275	365	565	715	1065	1050
C [mm]	-	173	185	190	200	220	435
D [mm]	-	-	145	345	495	845	800
Water Connections	G 1/2	G 1/2	G 1/2	G 1/2	G 1/2	G 1/2	G 1/2
Net Weight/Weight with packing/Weight full of water [kg]	8/9/18	15,5/17,5/45,5	21/23/71	27/29/107	31/33/131	41/44/191	65/73/265
Packaging dimensions [mm]	300x400 x530	480x490 x493	480x490 x595	480x490 x800	480x490 x960	480x490 x1330	590x600 x1600
Technical information							
Nominal pressure [bar]	9	9	9	9	9	9	9
Safety valve [bar]	10	10	10	10	10	10	10
Enameled deposit	✓	✓	✓	✓	✓	✓	✓
Magnesium rod	✓	✓	✓	✓	✓	✓	✓
Temperature selection up to 75c	✓	✓	✓	✓	✓	✓	✓
Pilot light	✓	✓	✓	✓	✓	✓	✓
Average insulation thickness [mm]	40	34	17	17	17	17	25
Degree of protection against humidity	IP 24	IP 24	IP 24	IP 24	IP 24	IP 24	IP 24
Nominal power [W] / Voltag	2000 230V	2000 230V	2000 230V	2000 230V	2000 230V	2000 230V	2000 230V
Operational Information							
Time to heat from 15 to 75°C	22 min	1h 05 min	1h 55 min	3h 05 min	3h 55 min	5h 45 min	7h 40 min
Quantity of water at 40°C [liters] ¹	18	49	95	146	193	282	360
Loss of energy in 24h [kWh per 24h] ²	0,33	0,90	1,23	1,57	1,78	2,06	3,00

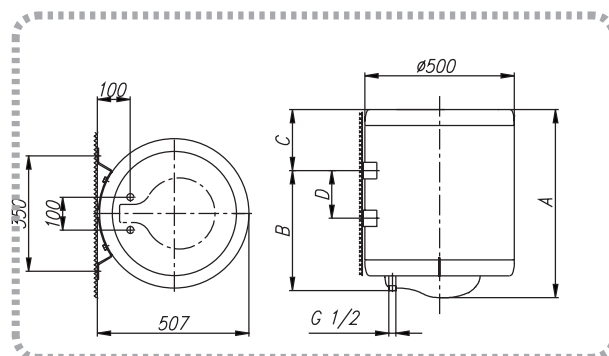
(1) Temperature of cold water entry: 15°C, accumulated temperature : 65 °C (according to DIN 44532 regulation).
Value for the electric heater in vertical position.

(2) Ambiance temperature: 20°C and accumulated temperature : 65°C (according to DIN 44532 regulation).

SI 30-150



SI 200



SI 10

